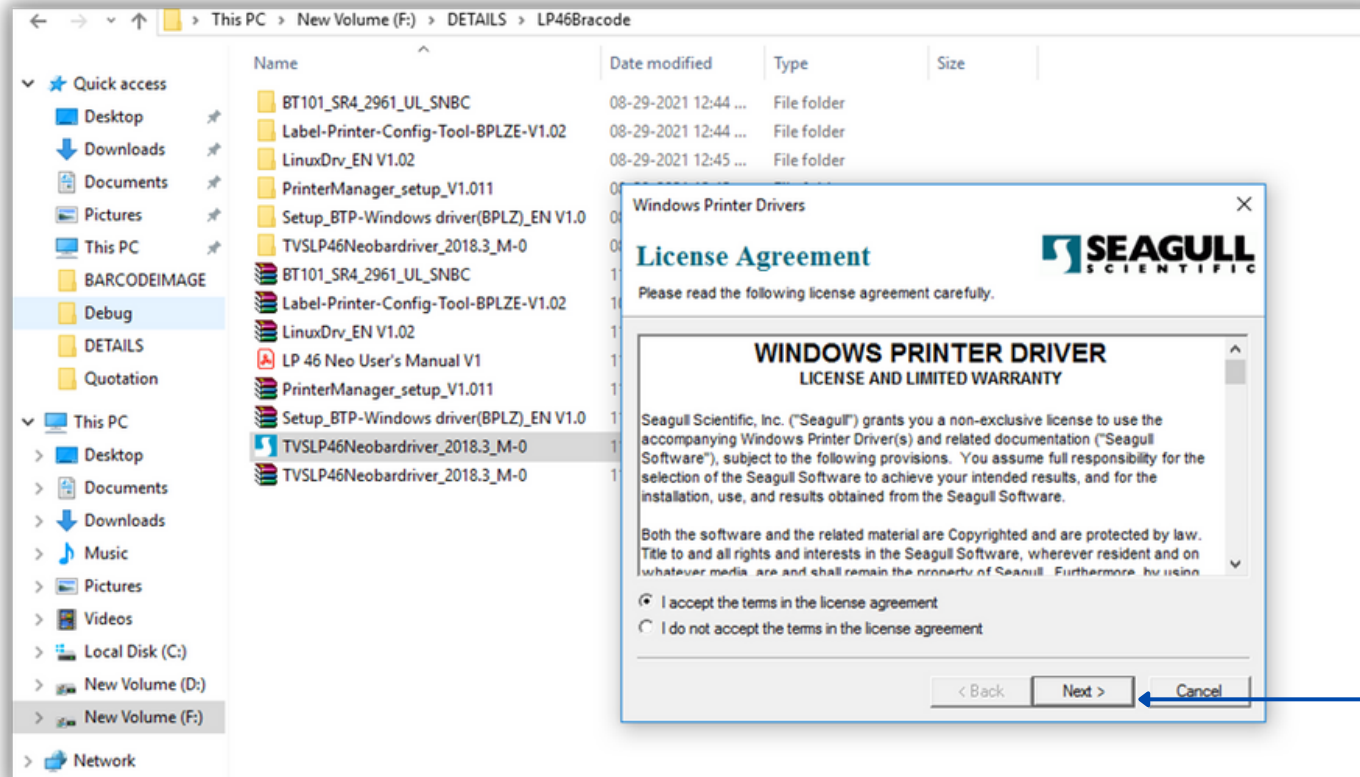


Barcode Configuration

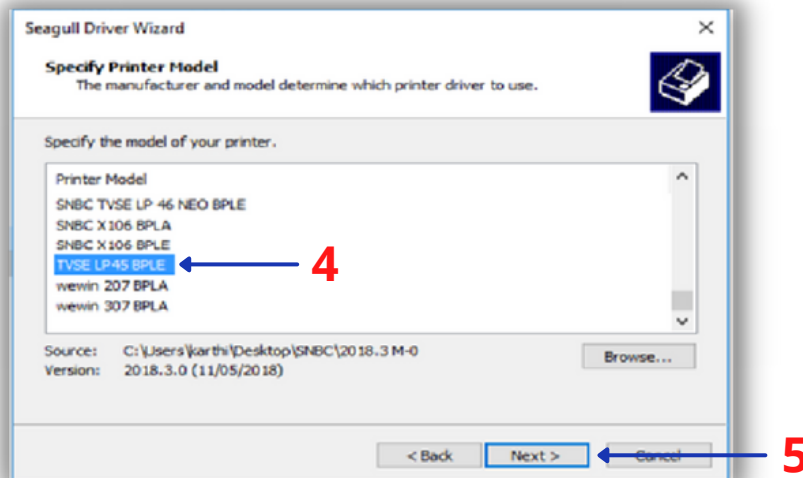
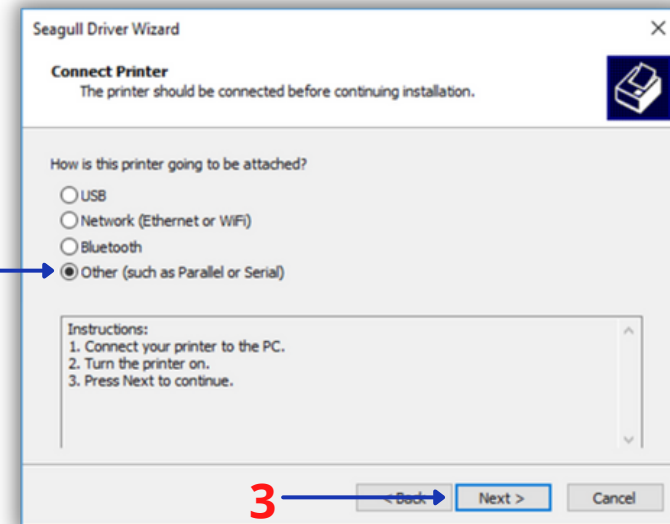
Barcode Configuration

Step1: Install The correct Barcode Driver

The Below Barcode Config Is Example for "TVS LP-46"



Barcode Configuration



1 → Click on "Next"

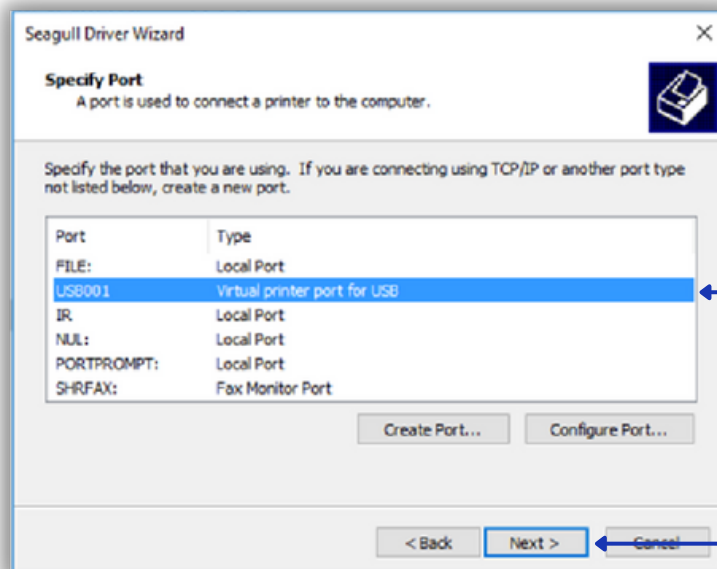
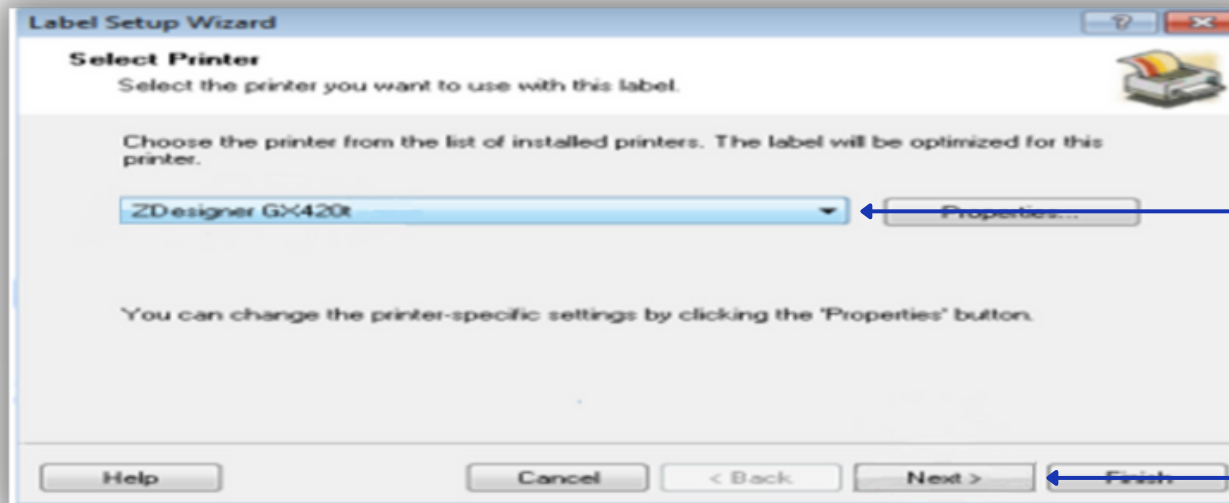
2 → Click on "Others"

3 → Click on "Next"

4 → Select the "Printer Name" (Barcode Printer Name)

5 → Click on "Next"

Barcode Configuration



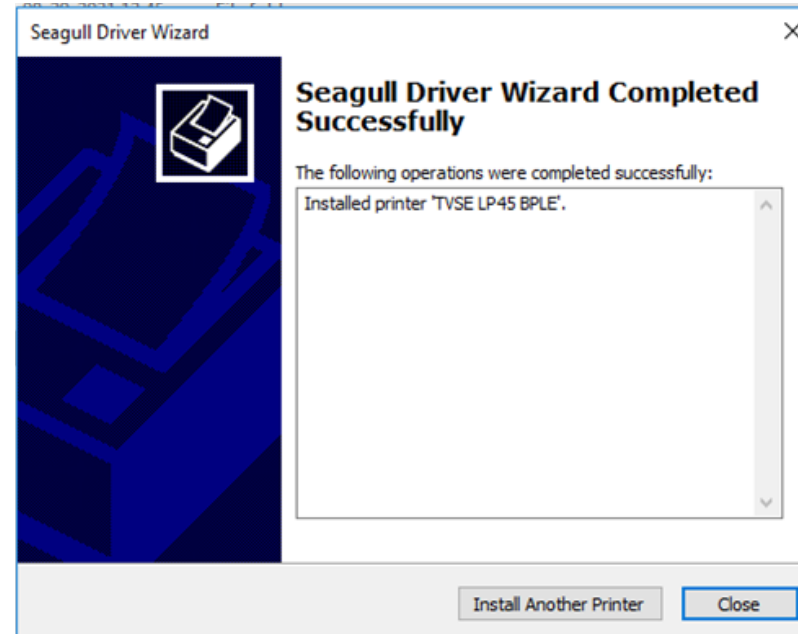
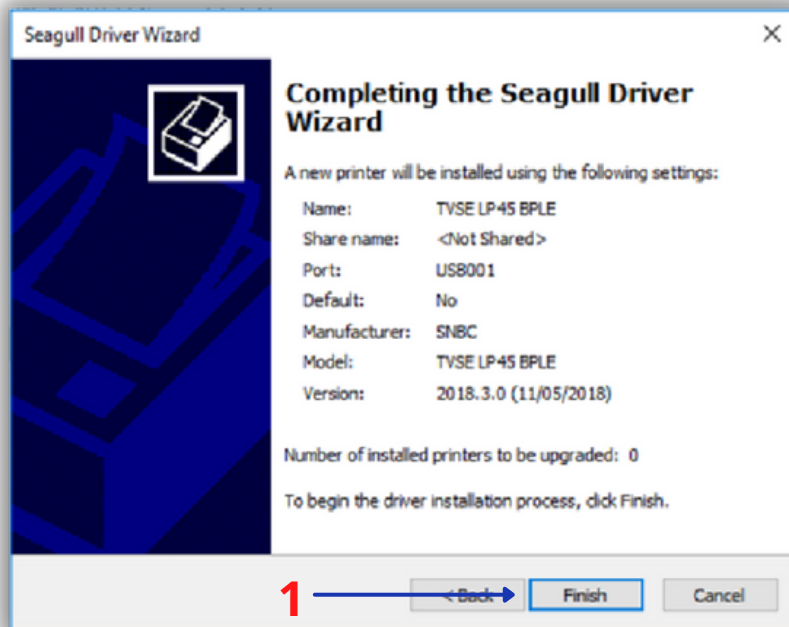
1 → Select on "ZDesigner" For Edit

2 → Click on "Next"

3 → Select the Port

4 → Click on "Next"

Barcode Configuration

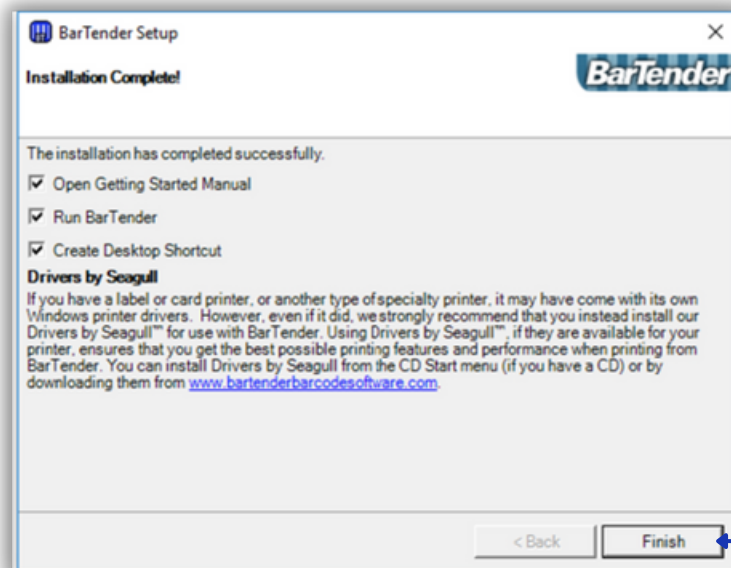
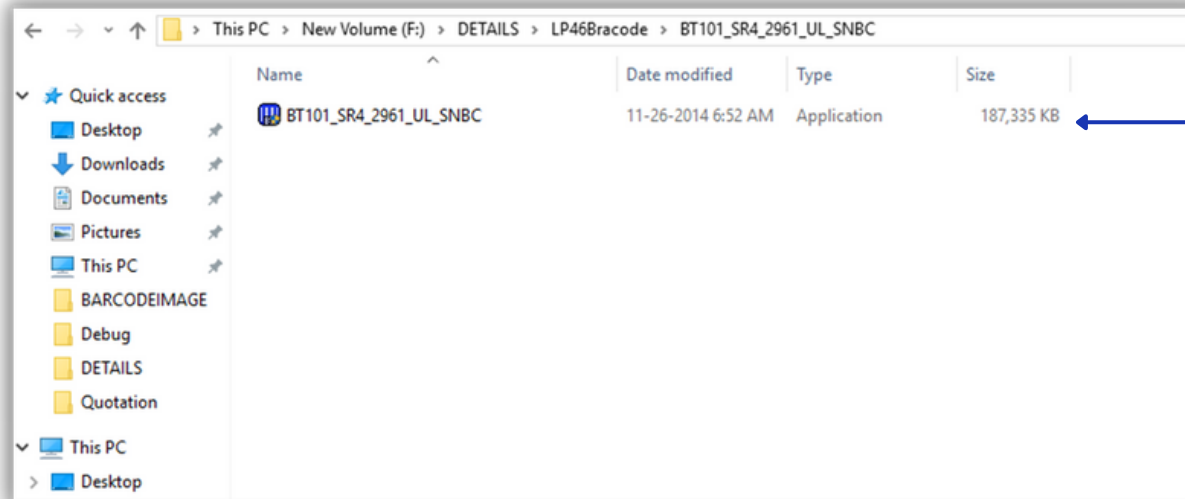


1 → Click on "Finish"

2 → Click on "Close"

Barcode Configuration

Step2: Now Install The Correct BarTender For Label Design



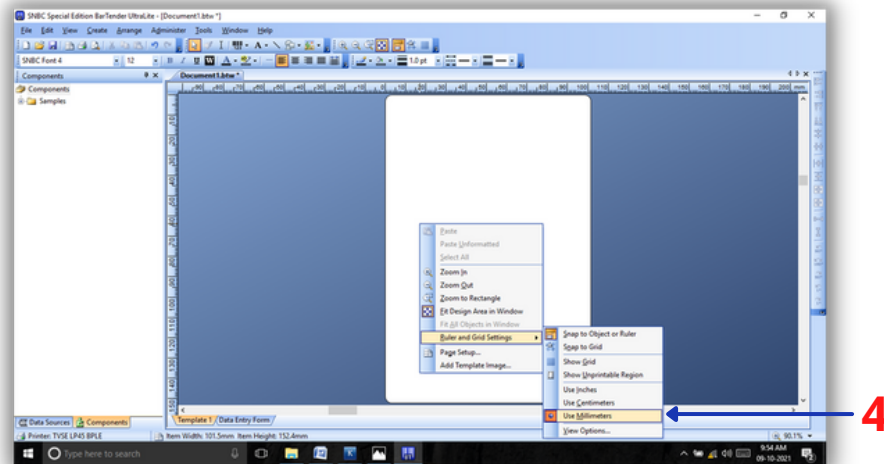
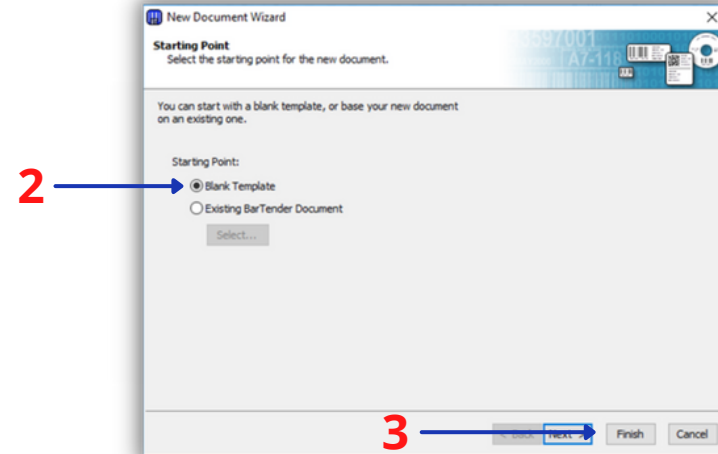
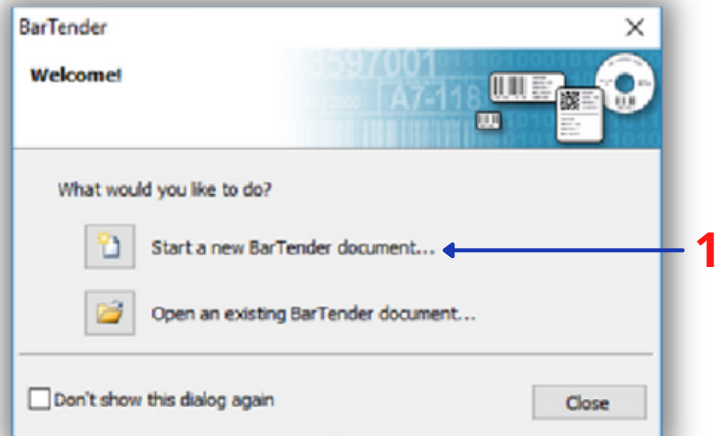
1 → Now Install The Suitable BarTender

2 → Click on "Finish"

Barcode Configuration

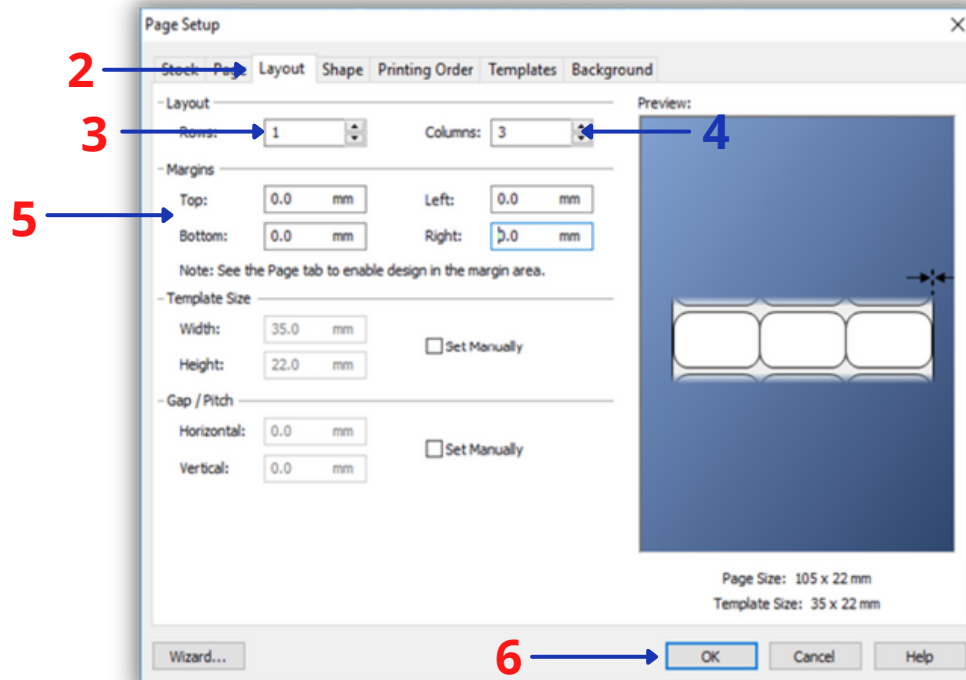
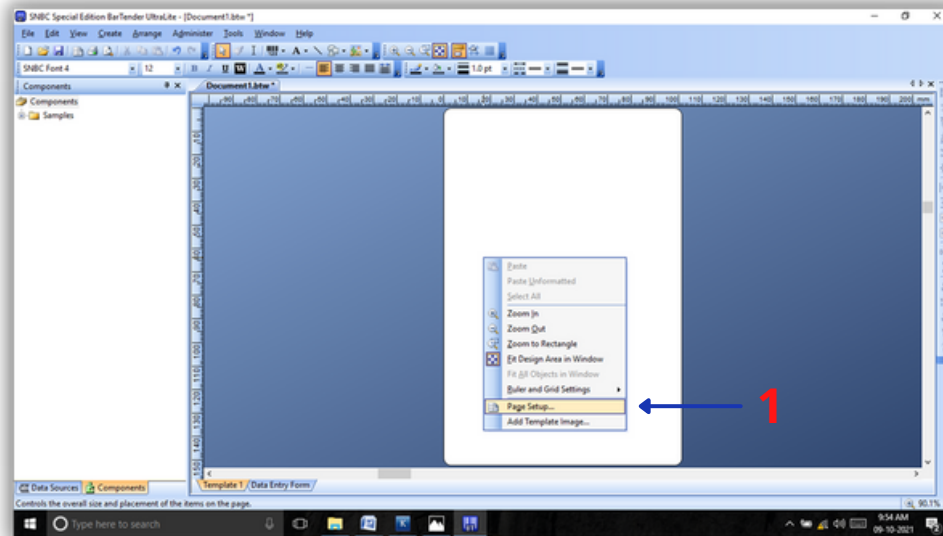
Step3: Now Edit The Label according to customer requirement

Open The BarTender



- 1 → Click on New BarTender Document
- 2 → Select "Blank Template"
- 3 → Click on "Finish"
- 4 → Right Click->Ruler and Grid Setting->select "Use Millimeters"

Barcode Configuration



1 → Right Click->Select Page Setup

2 → click on Layout

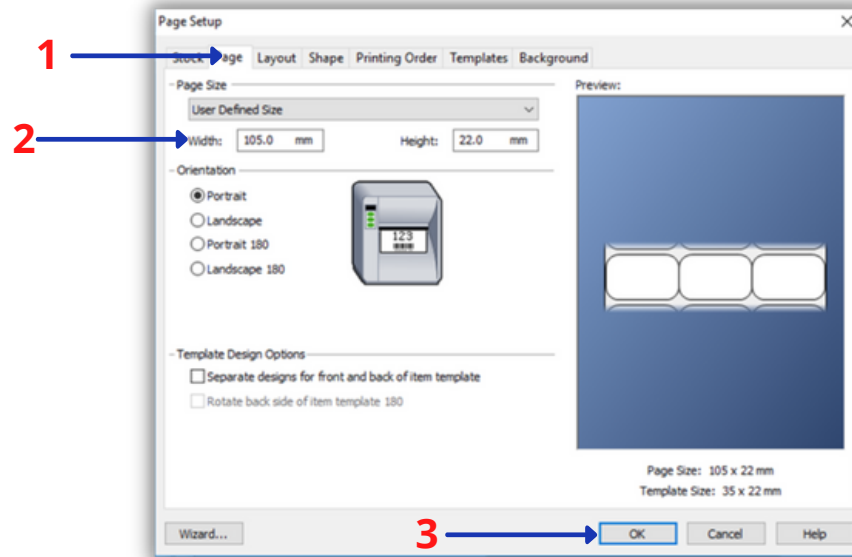
3 → Enter Number Of Rows

4 → Enter Number Of Columns

5 → Enter All Margins Value Zero

6 → Click on "Ok"

Barcode Configuration

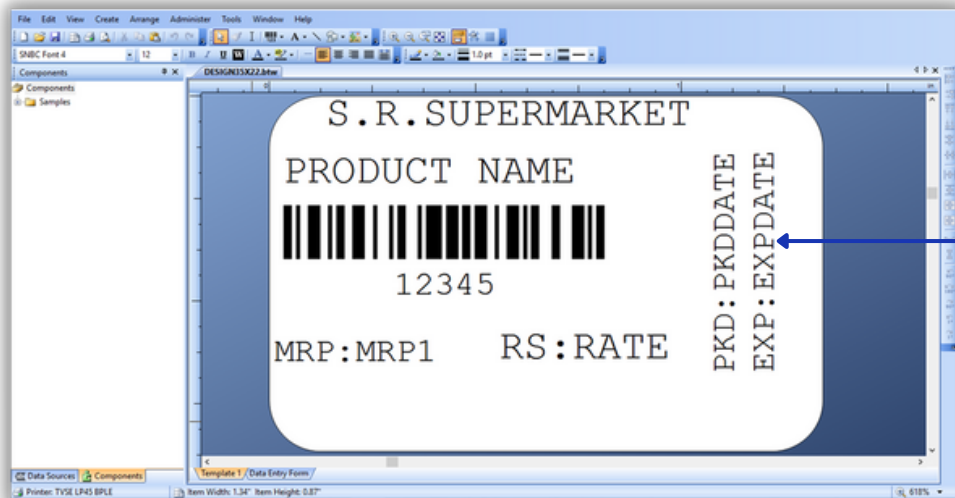


1 → Click on "Page"

2 → Enter The Width And Height Of One Row

3 → Click on "ok"

4 → Now Design The Label according to customer requirement



Note: There are some keywords available to design the barcode. Please refer the below page to learn more about those keywords.

Barcode Configuration

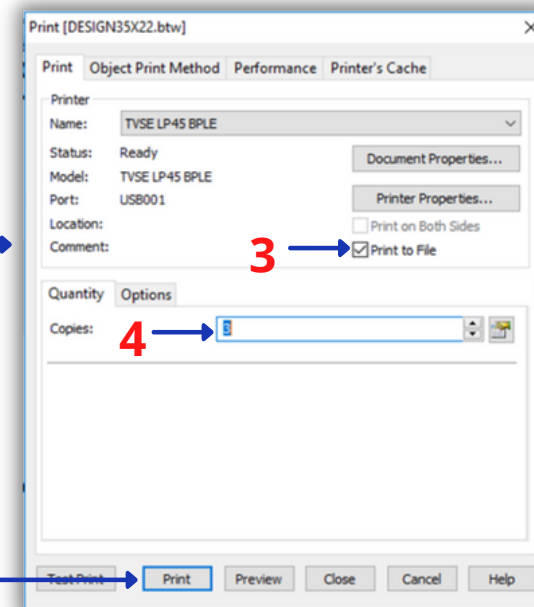
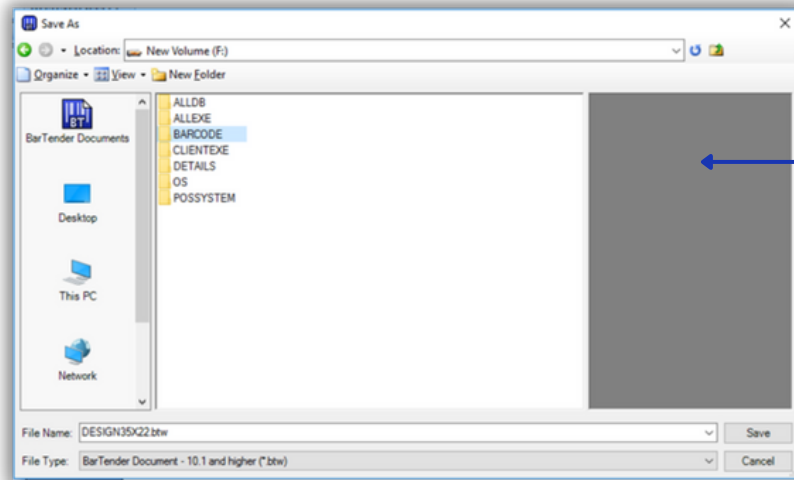
Use The Below Keywords to fulfill the Customer Requirements

1. For Product Name - PRODUCT NAME
2. For Rate - RATE
3. For MRP- MRP1
4. For Catogary Wise Discount- CATDIS
5. For Offer Amount- OFFERAMOUNT
6. For Supplier Invoice Number- SUPPLIERINVOICENO
7. For Supplier Name- SUPPLIERNAME
8. For Size- SIZE1
9. For Category- CATEGORY
10. For Brand- BRAND
11. For Packaged Date- PKDDATE
12. For ExpiryDate- EXPDATE
13. For Wait- GRAMS

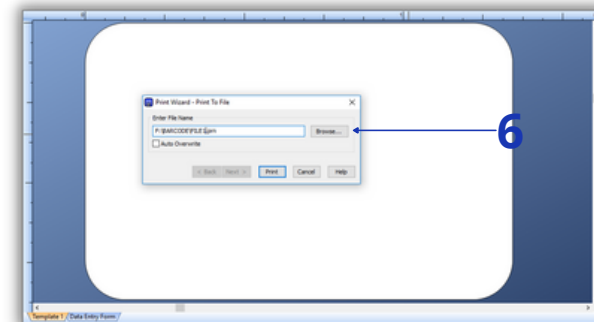
Note: To know about more keywords, open Kassapos Billing Software, click on "Barcode" and press "Ctrl+L", it will open all keyword details.

Barcode Configuration

Step4: Now Generate PNR File For Config To EXE

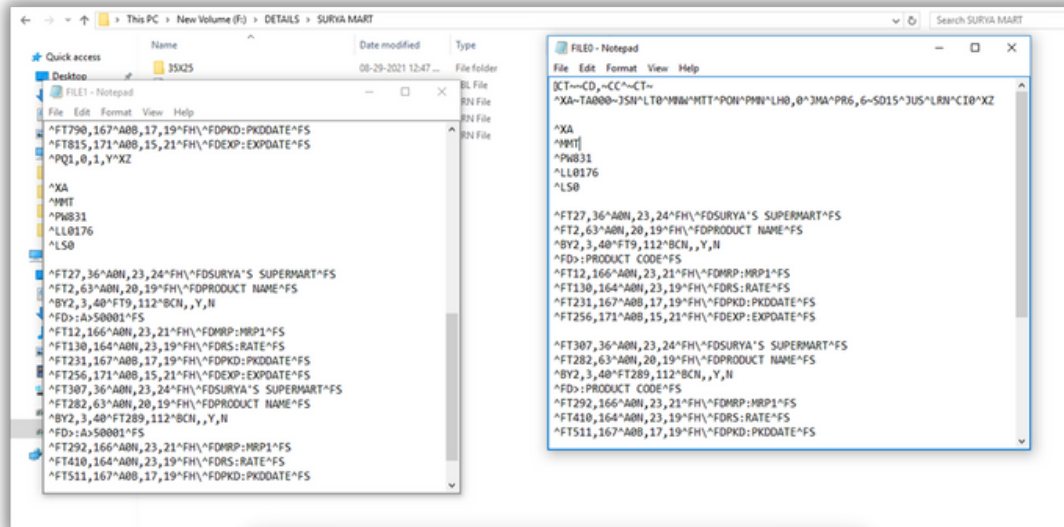


- 1 → First Save The Label(Ctrl+S)
- 2 → Press Ctrl+P and a Popup will Open
- 3 → Click on Print To File
- 4 → Enter Number 3 (Change Number One By One 7,9,11 And Print)
- 5 → Click on "Print"
- 6 → Save the file as per your wish



Barcode Configuration

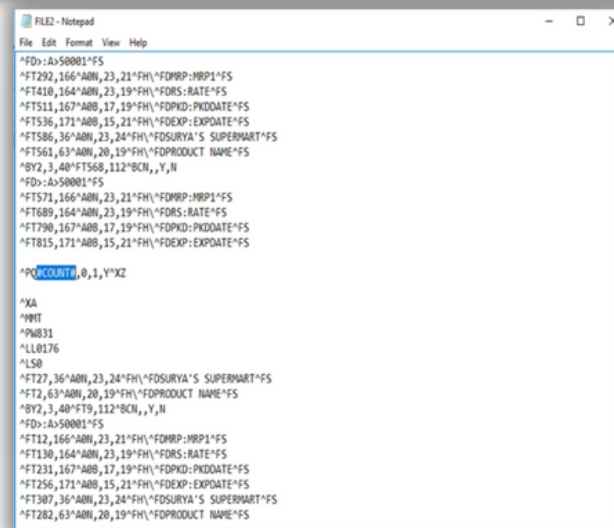
Now Open The Saved PNR file And Separate the File Like Below



1. Split header,added,bottom ,count,etc

2. change the ^PQ1,0,1,Y^XZ To
^PQ#COUNT#,0,1,Y^XZ

3. First Check The Other PNR file To Add
#count#. If In Other File The Last Number Is
Change Write #Count# Replacement Of Last
Number



Example: ^PQ1,0,1,Y^XZ To
^PQ1,0,#COUNT#,Y^XZ

Barcode Configuration

```
FILED - Notepad
File Edit Format View Help
^XA~TA000~JSH~LT0~MNM~MTT~PON~PMW~LHD,0~JMA~PR6,6~SD15~JUS~LRN~C10~XZ

^XA
^MMT
^PW831
^LL0176
^LS0

^FT27,36^A0N,23,24^FH\^FDSURYA'S SUPERMART^FS
^FT2,63^A0N,20,19^FH\^FDPRODUCT NAME^FS
^BY2,3,40^FT9,112^BCN,,Y,N
^FD:A:50001^FS
^FT12,166^A0N,23,21^FH\^FDMRP:MRP1^FS
^FT130,164^A0N,23,19^FH\^FDRS:RATE^FS
^FT231,167^A0B,17,19^FH\^FDPKD:PKDDATE^FS
^FT256,171^A0B,15,21^FH\^FDEXP:EXPDATE^FS

^FT307,36^A0N,23,24^FH\^FDSURYA'S SUPERMART^FS
^FT282,63^A0N,20,19^FH\^FDPRODUCT NAME^FS
^BY2,3,40^FT289,112^BCN,,Y,N
^FD:A:50001^FS
^FT292,166^A0N,23,21^FH\^FDMRP:MRP1^FS
^FT410,164^A0N,23,19^FH\^FDRS:RATE^FS
^FT511,167^A0B,17,19^FH\^FDPKD:PKDDATE^FS
^FT536,171^A0B,15,21^FH\^FDEXP:EXPDATE^FS

^FT586,36^A0N,23,24^FH\^FDSURYA'S SUPERMART^FS
^FT561,63^A0N,20,19^FH\^FDPRODUCT NAME^FS
^BY2,3,40^FT568,112^BCN,,Y,N
^FD:A:50001^FS
^FT571,166^A0N,23,21^FH\^FDMRP:MRP1^FS
^FT689,164^A0N,23,19^FH\^FDRS:RATE^FS
^FT790,167^A0B,17,19^FH\^FDPKD:PKDDATE^FS
^FT815,171^A0B,15,21^FH\^FDEXP:EXPDATE^FS

^PQ1,0,1,Y^XZ
```

1 → Change The Words From Code To Product Code

Example: 50001 To
PRODUCT CODE

2 → The Example Of
Changed Product Code

2

```
FILED - Notepad
File Edit Format View Help
^XA~TA000~JSH~LT0~MNM~MTT~PON~PMW~LHD,0~JMA~PR6,6~SD15~JUS~LRN~C10~XZ

^XA
^MMT
^PW831
^LL0176
^LS0

^FT27,36^A0N,23,24^FH\^FDSURYA'S SUPERMART^FS
^FT2,63^A0N,20,19^FH\^FDPRODUCT NAME^FS
^BY2,3,40^FT9,112^BCN,,Y,N
^FD:PRODUCT CODE^FS
^FT12,166^A0N,23,21^FH\^FDMRP:MRP1^FS
^FT130,164^A0N,23,19^FH\^FDRS:RATE^FS
^FT231,167^A0B,17,19^FH\^FDPKD:PKDDATE^FS
^FT256,171^A0B,15,21^FH\^FDEXP:EXPDATE^FS

^FT307,36^A0N,23,24^FH\^FDSURYA'S SUPERMART^FS
^FT282,63^A0N,20,19^FH\^FDPRODUCT NAME^FS
^BY2,3,40^FT289,112^BCN,,Y,N
^FD:PRODUCT CODE^FS
^FT292,166^A0N,23,21^FH\^FDMRP:MRP1^FS
^FT410,164^A0N,23,19^FH\^FDRS:RATE^FS
^FT511,167^A0B,17,19^FH\^FDPKD:PKDDATE^FS
^FT536,171^A0B,15,21^FH\^FDEXP:EXPDATE^FS

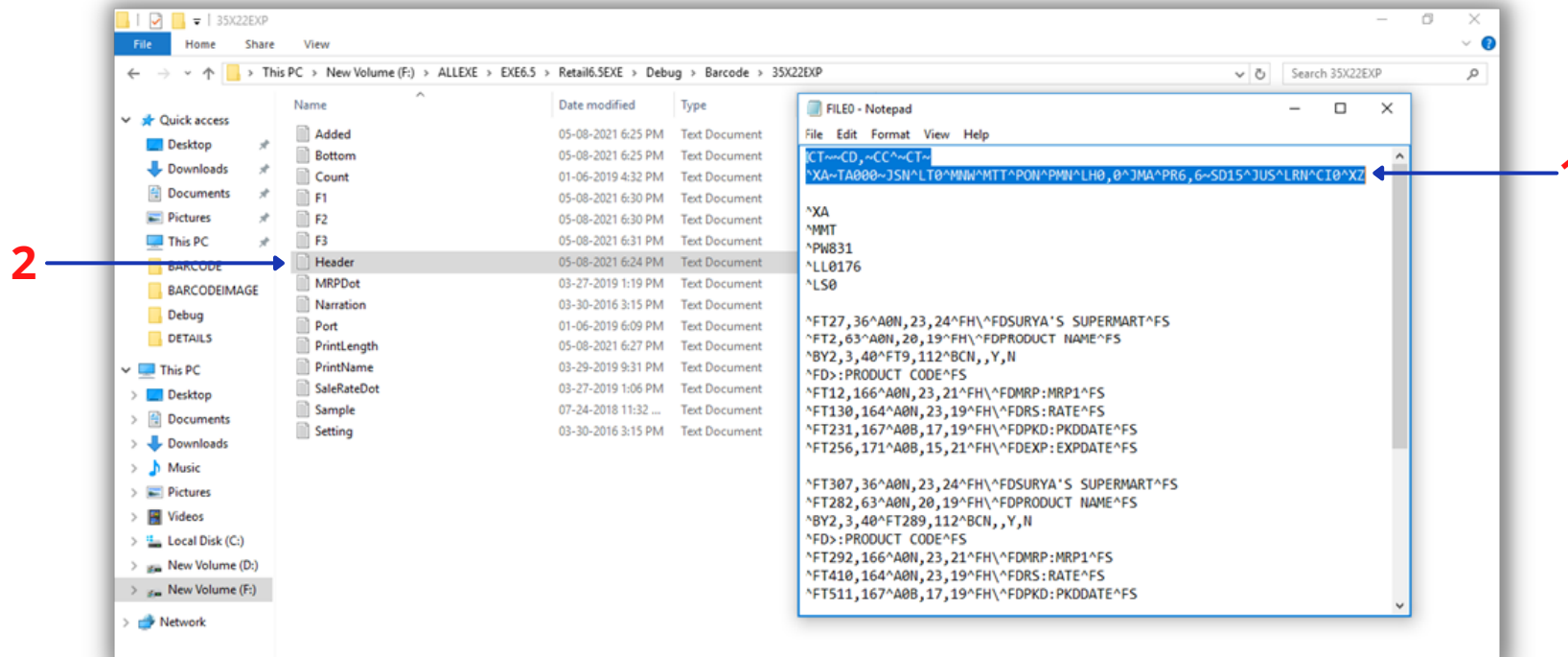
^FT586,36^A0N,23,24^FH\^FDSURYA'S SUPERMART^FS
^FT561,63^A0N,20,19^FH\^FDPRODUCT NAME^FS
^BY2,3,40^FT568,112^BCN,,Y,N
^FD:PRODUCT CODE^FS
^FT571,166^A0N,23,21^FH\^FDMRP:MRP1^FS
^FT689,164^A0N,23,19^FH\^FDRS:RATE^FS
^FT790,167^A0B,17,19^FH\^FDPKD:PKDDATE^FS
^FT815,171^A0B,15,21^FH\^FDEXP:EXPDATE^FS

^PQ1,0,1,Y^XZ
```

Barcode Configuration

Step5: Now Copy The Content And Paste To The EXE Folder

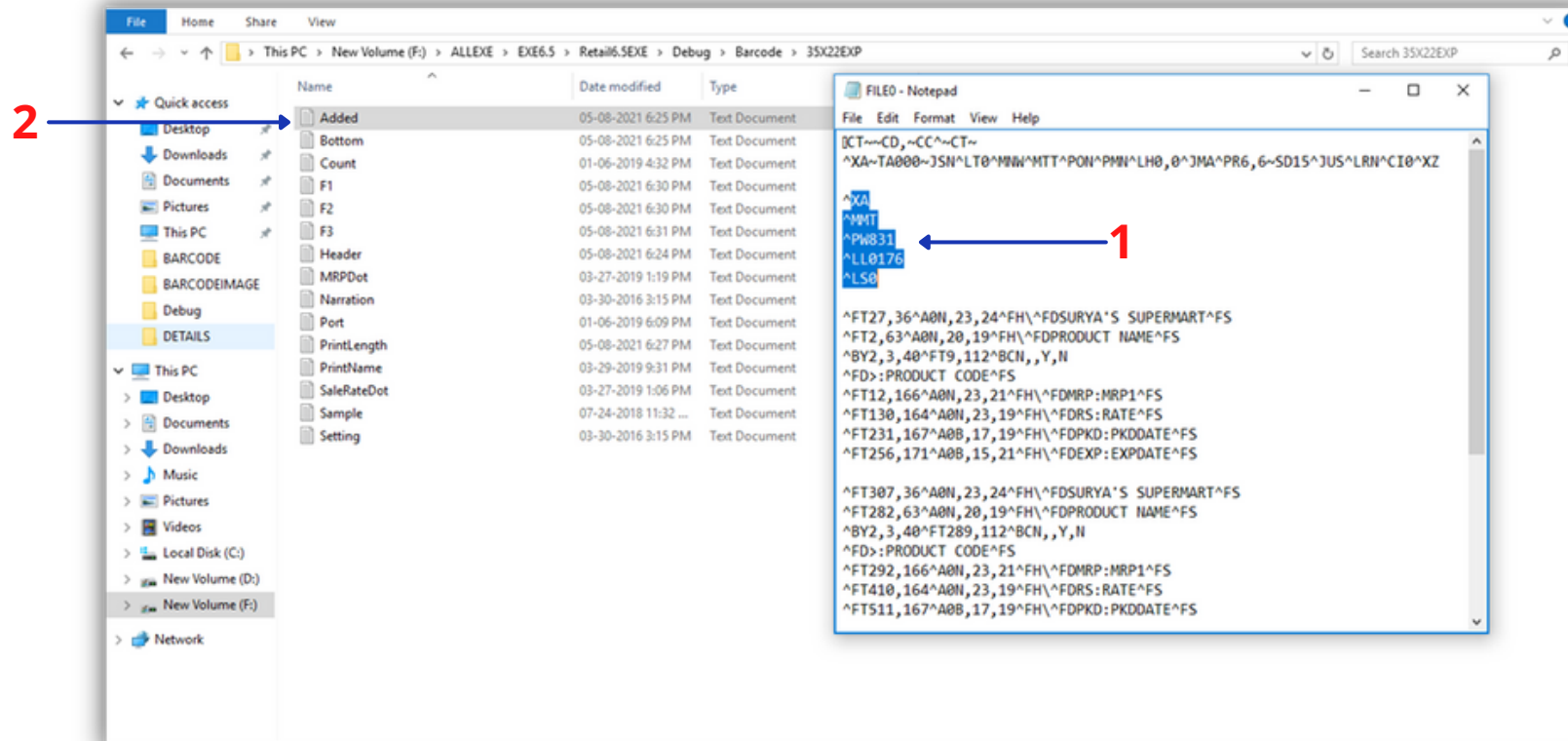
Open File Location->Barcode Folder->Select Folder Like Label Size



1 → Copy The Header Text

2 → Paste Header Text In Header File And Save

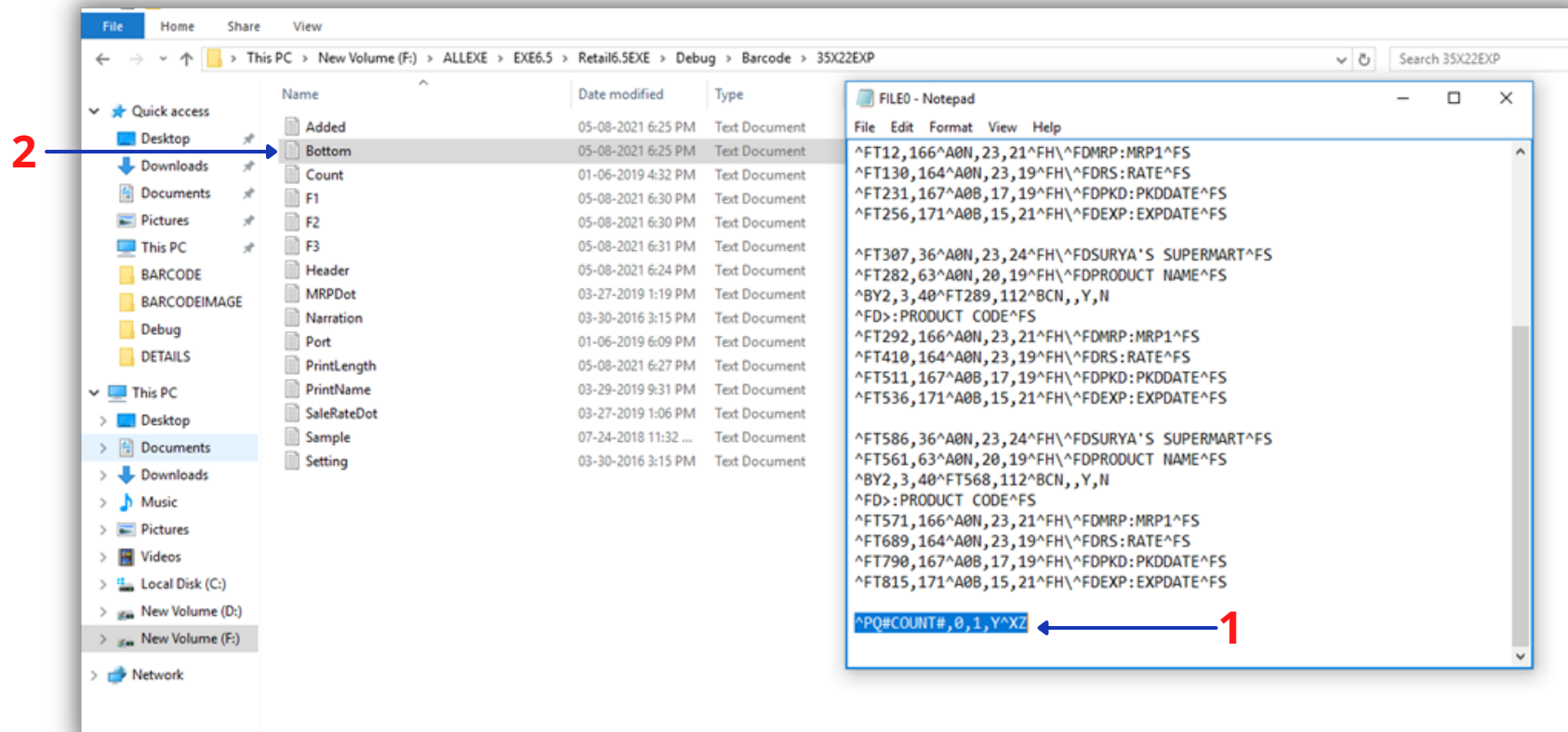
Barcode Configuration



1 → Copy The Adder Text

2 → Paste Adder Text In Adder File And Save

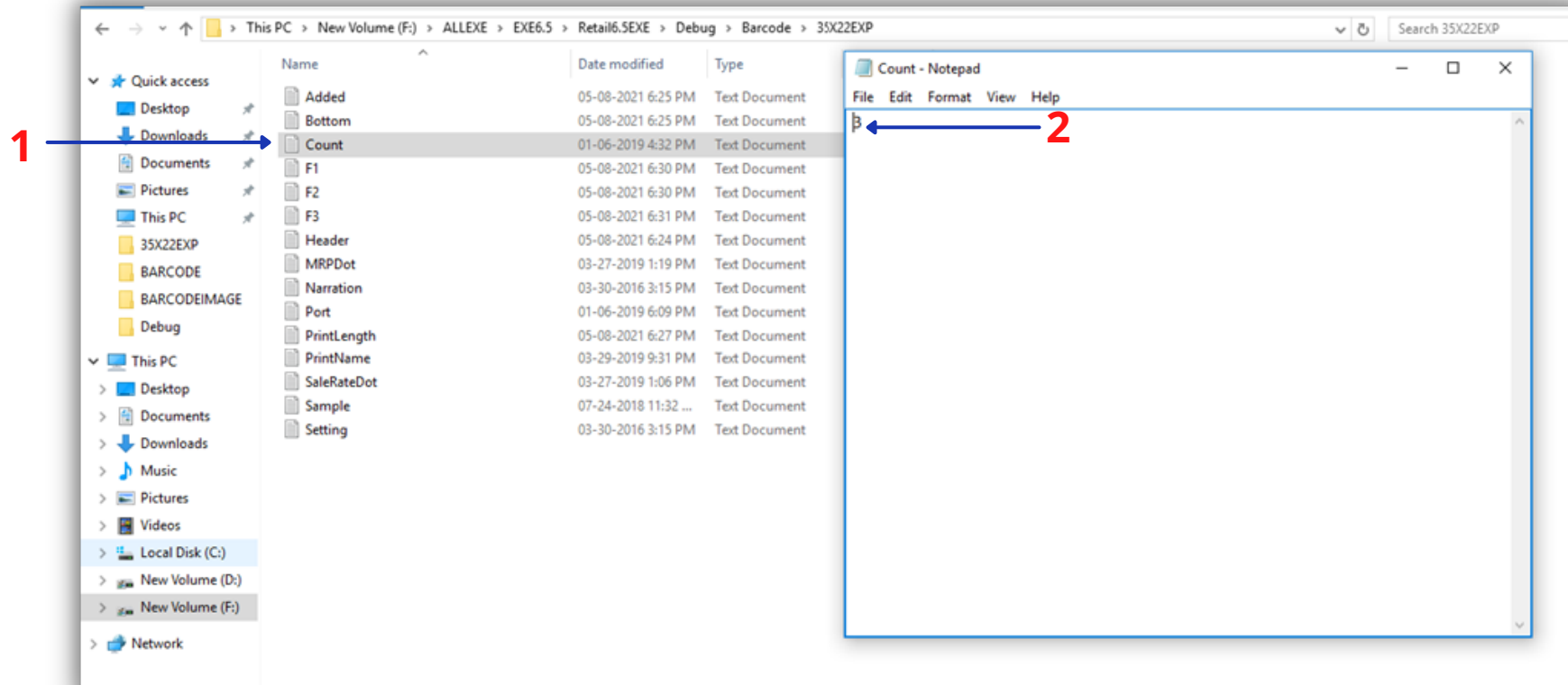
Barcode Configuration



1 → Copy The BottomText

2 → Paste Bottom Text In Bottom File And Save

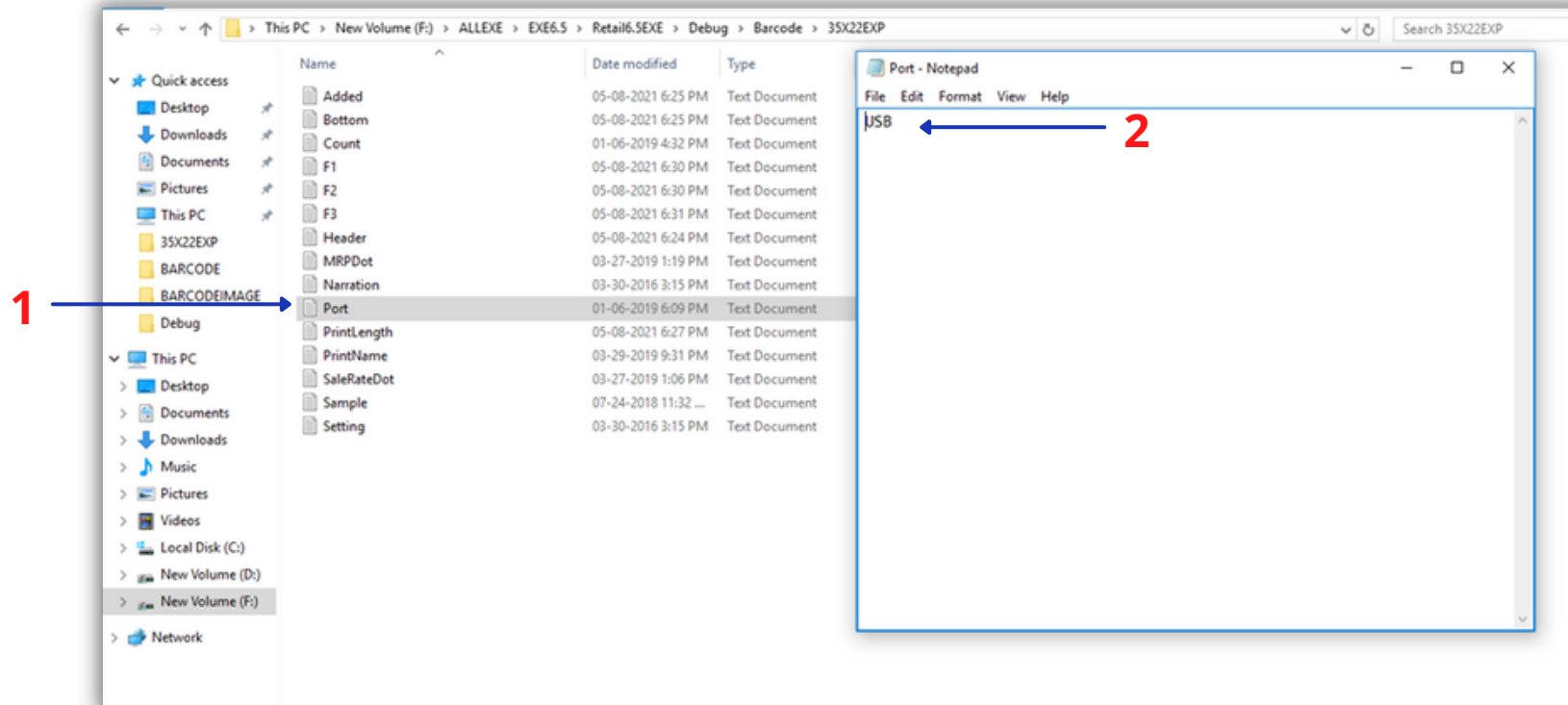
Barcode Configuration



1 → Open The Count File

2 → Enter The Number Of Columns And Save

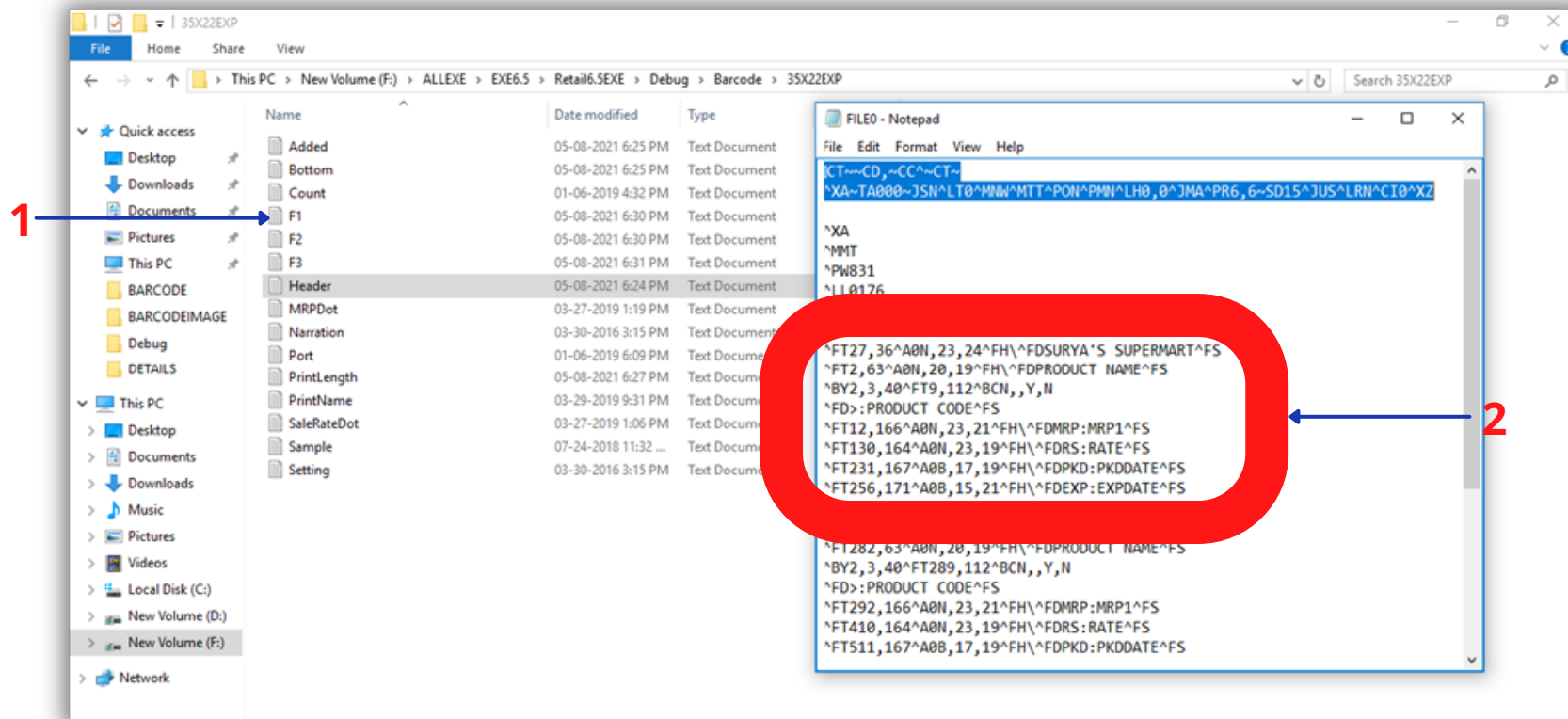
Barcode Configuration



1 → Open The Port File

2 → Enter The Printer Port If Printer Port Is LPT1
Replace The Word From USB to LPT1

Barcode Configuration



1 → Open The F1 File

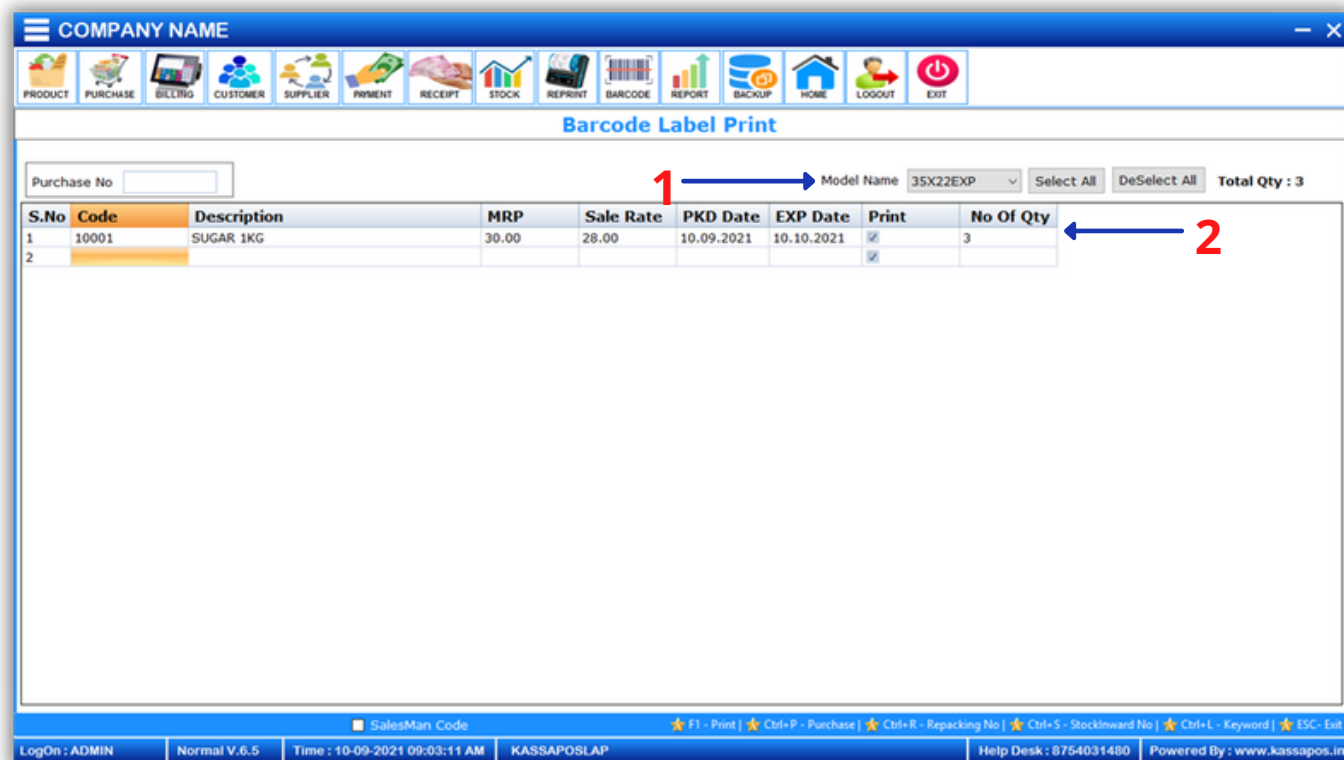
2 → Copy The Above Text And Paste To The F1 File

Copy The Next Text And Do The Same Process For F2 And F3

Barcode Configuration

Step6: Now Open The EXE For Barcode Print

EXE->Utils->Barcode Label



1 → If You Click Arrow Its Shows The Folder Name And Select The Edited Folder

2 → Enter The Product for which you want to Print And Press F1. Finally The Barcode will Generate the Label